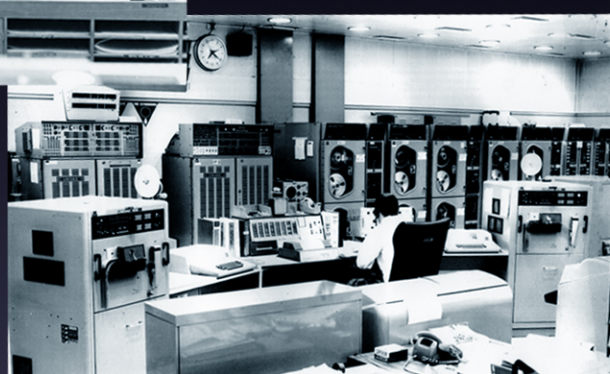




Apollo 8
 Apollo 9
 Apollo 10
 Apollo 11
 Apollo 12
 Apollo 13
 Apollo 14
 Apollo 15
 Apollo 16
 Apollo 17
 Skylab



Deep Space Missions
 Pioneer 10
 Pioneer 11
 Helios 1
 Helios 2
 Viking 1
 Viking 2
 Voyager 1
 Voyager 2
 Pioneer Venus



After thousands of years of evolution, it only took half a lifetime for homo sapiens to go from an Earthbound species to spacefaring humans.

At the forefront of this endeavour was Canberra's Honeysuckle Creek Tracking Station built especially for the Apollo lunar missions.

Opened by the then Prime Minister Harold Holt on the 17th March 1967, it supported all the main trailblazing expeditions into our solar system, both human and robotic, including that first step on the surface of the Moon by Neil Armstrong.

The story of Honeysuckle Creek and the missions are told on the website:

www.honeysucklecreek.net

HONEYSUCKLE CREEK

TRACKING STATION • 1967 - 17 MARCH - 2017