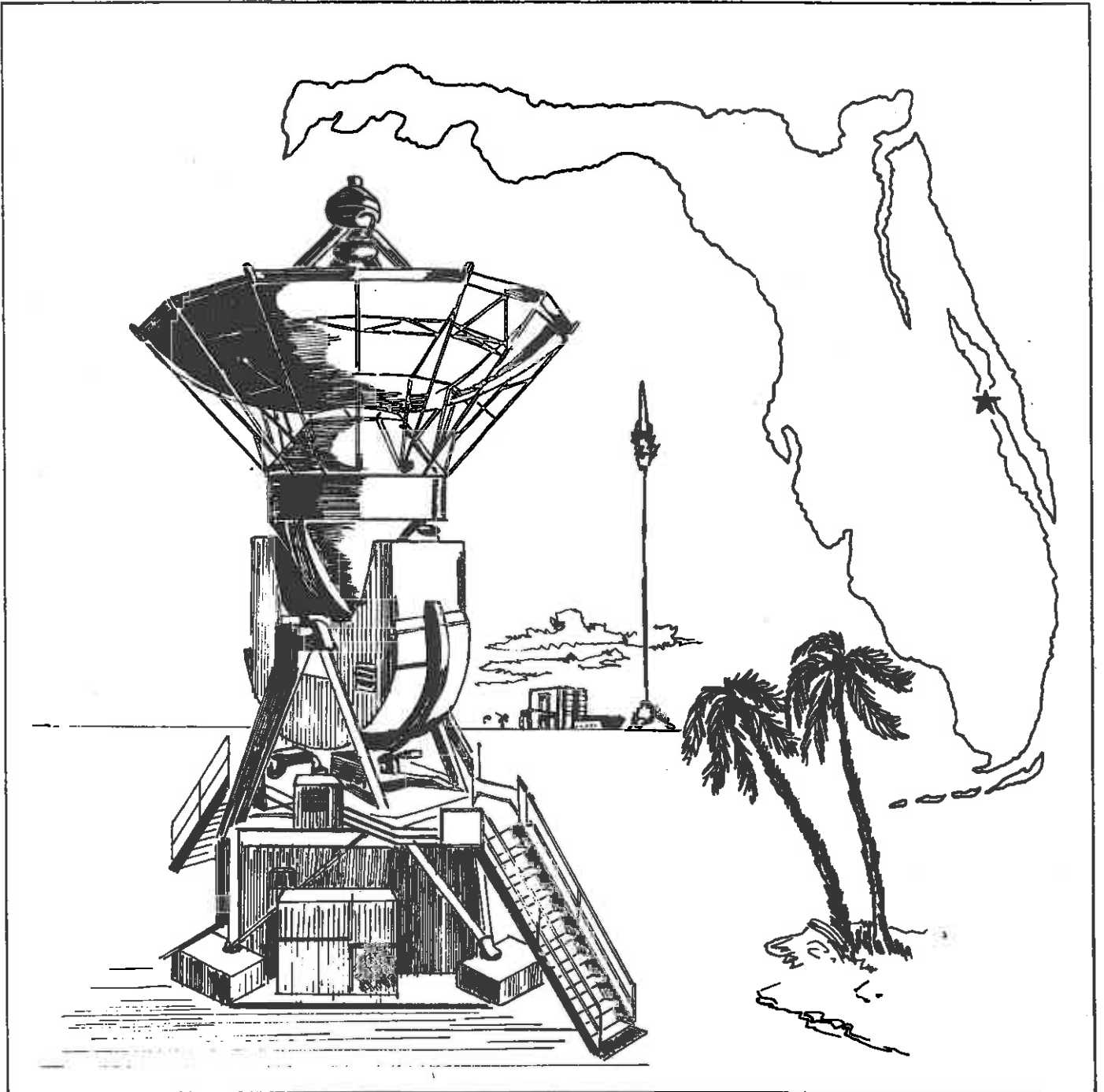


The Merritt Island Story



**Field Engineering
Corporation**

THE MERRITT ISLAND STORY

**Some useful facts and figures for personnel proceeding
to the Spaceflight Tracking and Data Networks station at
Merritt Island, Florida.**

prepared by:

**BENDIX FIELD ENGINEERING CORPORATION
A Subsidiary of The Bendix Corporation
Columbia, Maryland 21045
Revised May 1973**

TABLE OF CONTENTS

Section	Title	Page
I	The Station	1
II	Background Information on Station Locale	3
III	Living Accommodations and Commodities	6
IV	Community Facilities	7
V	Transportation	10
VI	Currency and Banking	11
VII	Clothing/Grooming	12
VIII	What to do Upon Arrival	12



Merritt Island STDN Station

I. THE STATION

A. Primary Mission and Brief History of Station

The Merritt Island Spaceflight Tracking and Data Networks (STDN) station is one of the worldwide network of NASA tracking stations operated by NASA's Goddard Space Flight Center, Greenbelt, Maryland.

The station provides critical earth-orbital and deep space information to project control centers for NASA manned and unmanned missions. One of the station's important functions is to verify ground station compatibility with flight articles prior to launch and to provide launch control centers with real-time information during terminal countdown and powered flight.

Implementation of the station began during the final phase of the Gemini program to support Apollo. During the Apollo program, all of the Apollo launches were supported along with many of the unmanned NASA and DOD launches.

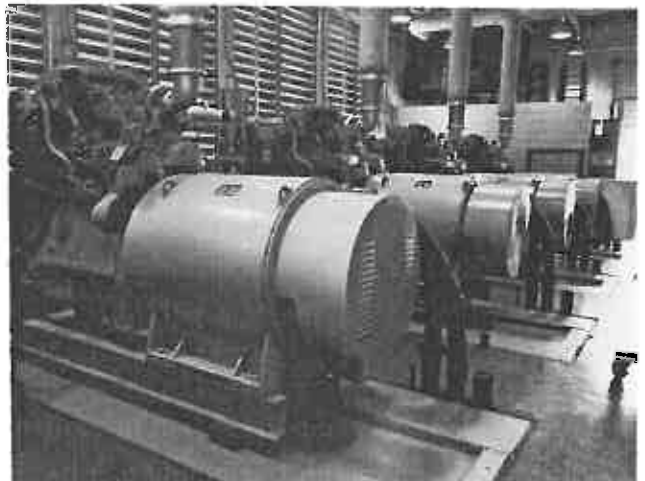
B. Brief Description of the Site Layout

The station consists of an operations/equipment building and a power generation building. Logistics and engineering support areas are located in trailers at the present time. Although the station operates on commercial power, station-generated power (diesel driven generators) is utilized for all major tests and launches.

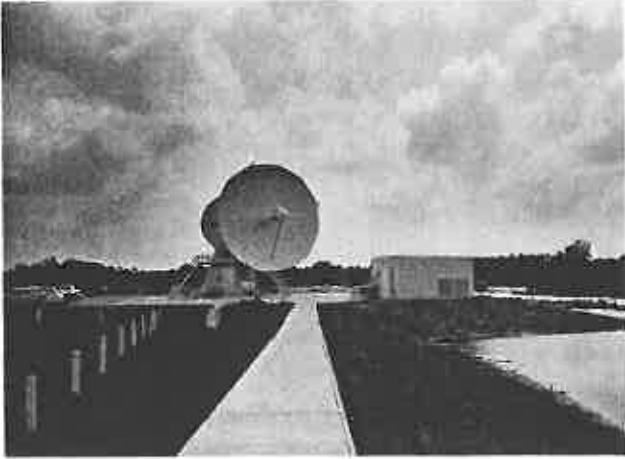
Cafeteria facilities are not available; however, the station is served by a mobile lunch wagon from Kennedy Space Center at noon.



Operations Building



Power Generators



USB Antenna & Hydromechanical Building



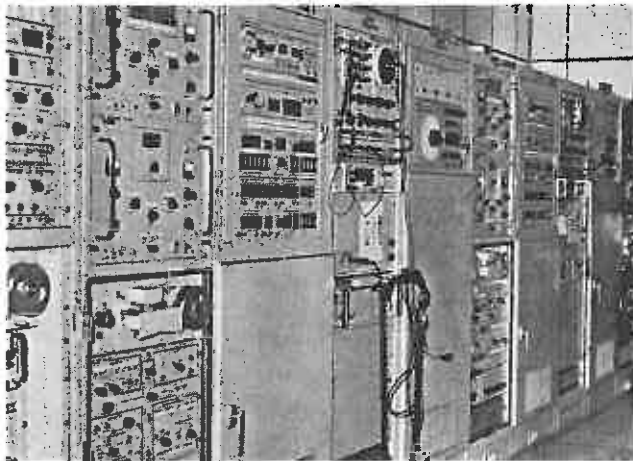
USB Receiver/Exciter

C. Major Operational Systems

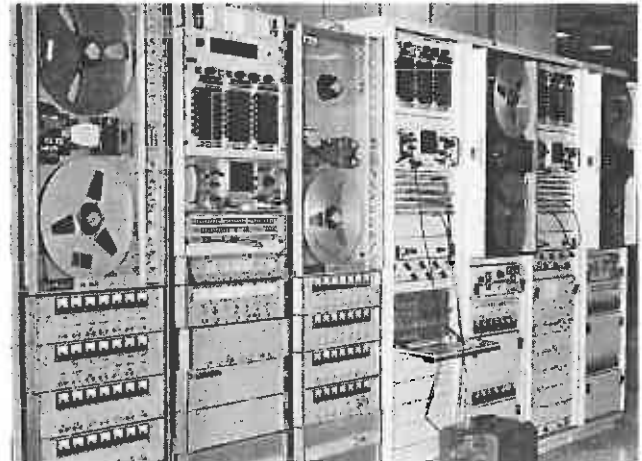
The station has a dual S-band system, a VHF system (215-265 MHz band), a VHF air/ground (259-296 MHz band) and a VHF system (136-149 MHz band) which when utilized with the complex array of antennas and data processing equipments support such functions as command, telemetry, tracking, voice, and television.

D. Station Management Policies

Certain policies have been established for operation of the station, and employees are expected to adhere to them. These policies are covered in detail in the Station Operation Procedures Handbook. It is often necessary to operate on 24-hour-a-day, 7-day-a-week schedules, in support of tests and missions. Normally, however, the station operates on two shifts, 5 days a week.



PCM Decommutter

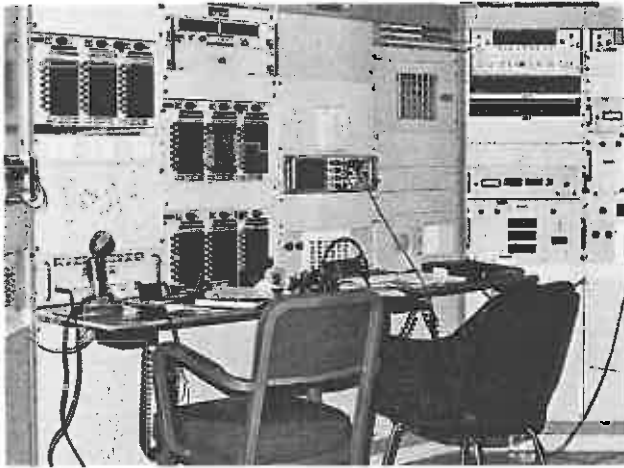


Wideband Recorder

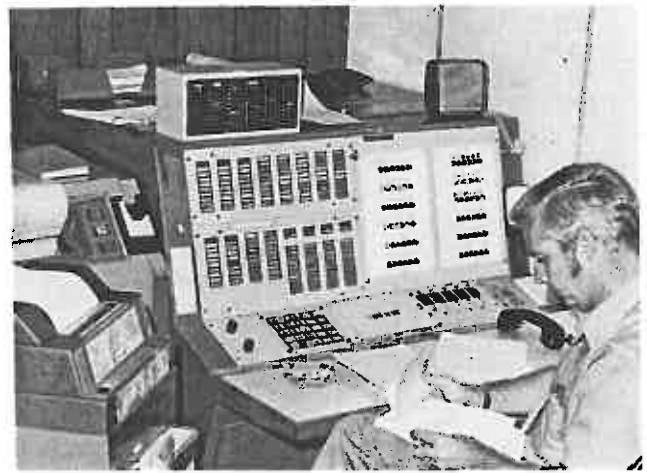
The first shift is from 0800 to 1630; the second is from 1600 to 0030; and the third is from 2400 to 0830. Personnel at the station rotate shifts every 28 days, so personnel reporting to work should expect to work each of these shifts in turn.

Upon assignment to the Merritt Island station, personnel are expected to complete relocation within 14 days of arrival. If more time is needed, one must have the concurrence of the M&O supervisor and written justification for the additional time. The mailing address of the station is:

Name
Bendix Field Engineering Corporation
P. O. Box 1947
Titusville, Florida 32780



Data System Data Control Console



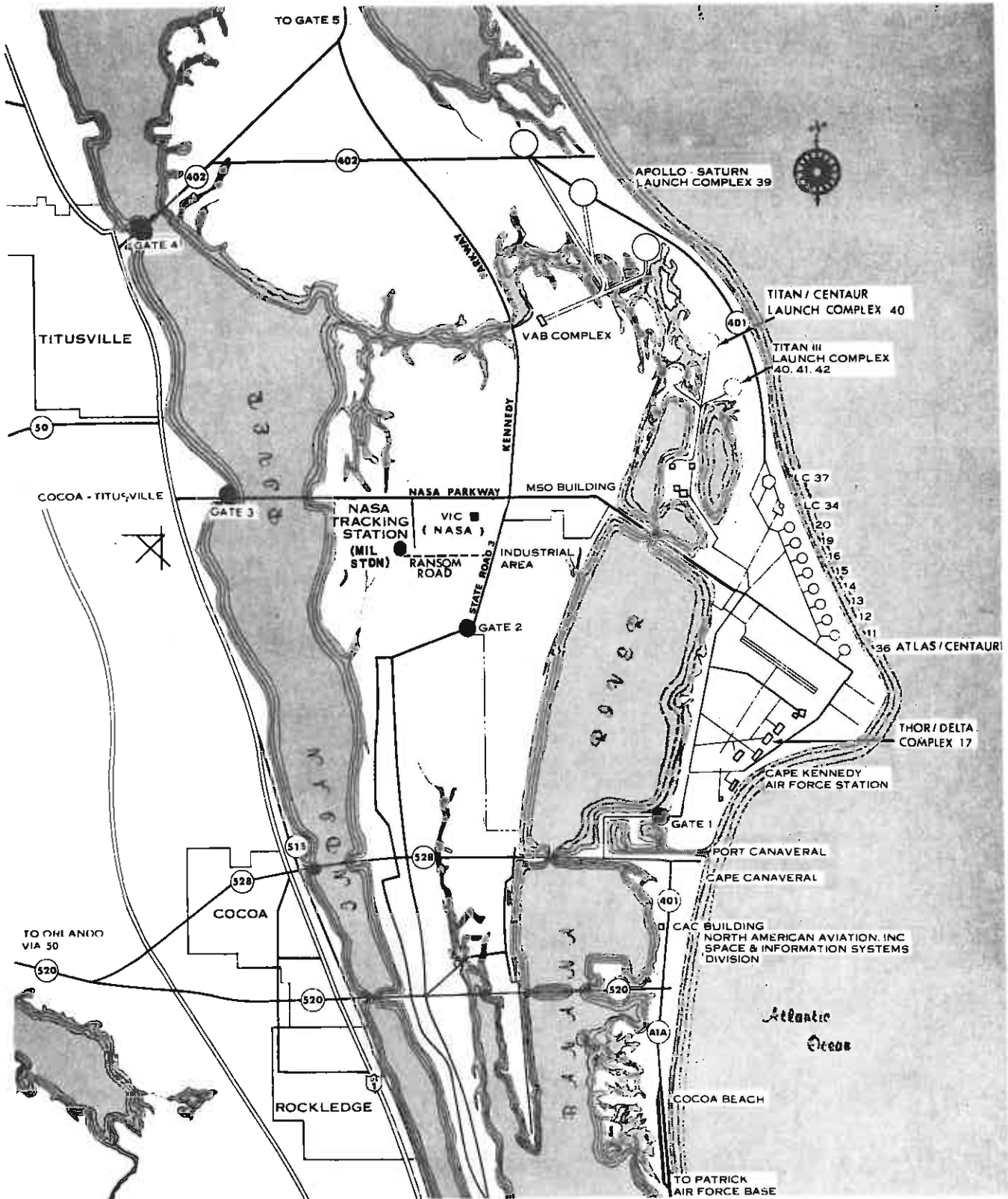
M&O Console

II. BACKGROUND INFORMATION ON STATION LOCALE

A. Geographic Description

1. Location

Merritt Island is in the heart of Brevard County, Florida, halfway between Jacksonville and Miami. The central Brevard area lies between the St. Johns River on the west and the Atlantic Ocean on the east. The Indian and the Banana rivers flow through the center of the area, between the mainland and the peninsula on which are located Cape Kennedy Air Force Station,



NASA Tracking Station Area Location

Kennedy Space Flight Center, Patrick Air Force Base, and the surrounding communities. It is these two rivers flowing lengthwise through the area that form Merritt Island. The station is on the NASA Parkway (State Road 50), 8 miles south of Titusville, 12 miles north of Cocoa, and 25 miles northwest of Cocoa Beach.

2. Terrain

The region in the area of the Kennedy Space Flight Center is generally flat. The center itself is a national wildlife refuge. Like most of Florida, the undeveloped areas are covered with palmetto bushes and scrub pine.

3. Climate

The weather is generally considered pleasant. Although the summers are hot and humid, the winters are mild, with very cool mornings. The mean temperature is 72.5 degrees, and the average annual rainfall is 50.74 inches. The elevation of Merritt Island reaches 81 feet above sea level, and breezes from the Indian and Banana rivers and the Atlantic Ocean refresh the area. Although the hurricane season extends from early June to late November, the island has never suffered from sustained winds of hurricane force. Persons suffering from allergies aggravated by pollen find the region agreeable since the pollen count in the area is generally very low.

B. History of Area

A part of a Spanish grant, Merritt Island was received in 1839 on behalf of this country by General Merritt, for whom it is named. It remained relatively unoccupied until 1868, when a small settlement was begun near Indianola. The first hotel was opened in 1891. The chief products were cattle, pineapple, sugarcane, and citrus fruit, which were shipped north from Titusville by rail or sent to Savannah and Charleston by boat. The settlers also found it profitable to trade with the Indians and with other settlements along the rivers. Conditions for the settlers were improved in 1917, when the first bridge to the mainland was constructed. Until that time, boats were the only means of communication and transportation between the island and the mainland. The bridge also opened the island to tourist and vacation resort trade.

III. LIVING ACCOMMODATIONS AND COMMODITIES

A. Housing

There are a number of motels in Titusville on U. S. Route 1. Both the Holiday Inn, near State Road 50, and the Quality Motel, north of State Road 50, grant commercial rates to Bendix employees. Apartments are also available in private homes. In an apartment complex, costs range from \$110 for an efficiency to \$140 and up for a two- or three-bedroom apartment. Apartments in private homes tend to be less expensive: \$75 to \$125 and up for one- and two-bedroom apartments. Houses can be bought or rented, although it is rather difficult to find a house for rent. Hundreds of new homes have been built to accommodate the growing community; suitable houses can be bought in Titusville, Cocoa, Cocoa Beach, or Merritt Island, depending upon requirements. Prices for a two-bedroom home start at \$12,000; three- and four-bedroom houses cost from \$18,000 to \$25,000 or more. Houses rent from \$100 to \$150 or more per month, depending upon their size, type, and location. Condominiums are being built and sold at a rapid pace. Condominium prices start at \$18,000. Mobile home registration is \$50 and up, and mobile parks are plentiful. Complete information about accommodations and realtors is available from the Chamber of Commerce in Merritt Island, Titusville, Cocoa Beach, or Cocoa. Both Merritt Island and Titusville have enclosed air-conditioned shopping malls.

B. Utilities

Electrical power for a family of four averages approximately \$30 a month, using air conditioning. Water, sewage, and garbage pickup for a family of four averages approximately \$25 a month. Central LP and natural gas are available in most of the areas and are fairly economical.

C. Food

Most of the chain stores are readily available to all areas; however, food prices are high.

D. Laundry and Drycleaning

Laundromats and drycleaning facilities are readily available to all areas.

IV. COMMUNITY FACILITIES

A. Religious Services

The many churches in the central Brevard area represent a variety of denominations. To make it easier to find the church of one's choice, a list of specific churches is given here:

Merritt Island Assembly of God - Grove and Tangerine Streets, Merritt Island

First Baptist - Magnolia Avenue, Merritt Island

Divine Mercy Roman Catholic - 1949 North Courtenay Pike, Merritt Island

Greater St. Paul - 213 Magnolia Avenue, Cocoa

Metropolitan Baptist - 474 King Street, Cocoa

Mt. Moriah Methodist - 304 Magnolia Avenue, Cocoa

Factory Street Church of Christ - 225 Factory Street, Cocoa

Antioch Baptist - Merritt Avenue, Merritt Island

First Christian - Richland Avenue, Merritt Island

Central Brevard Christian - Professional Arts Building, 520 Causeway, Merritt Island

Church of God - 737 South Banana River Drive, Merritt Island

St. Luke's Episcopal (Anglican) - North Courtenay Pike, Merritt Island

Grace Methodist - 65 Needle Boulevard, Merritt Island

Wesleyan Methodist - 220 North Tropical Trail, Merritt Island

Free Methodist - North Tropical Trail, Merritt Island

Georgiana Methodist - South Tropical Trail, Merritt Island

First Presbyterian - 25 Cone Road, Merritt Island

Faith Lutheran - Merritt Avenue, Merritt Island

Redeemer Lutheran - South Courtenay Pike, Merritt Island

Jehovah's Witness - 520 South Plumosa Drive, Merritt Island

Temple Israel - Cocoa Beach

Nondenominational - Island Drive-In Theater

B. Educational Facilities

The Brevard County School System operates its schools on a 9-month, ungraded system.

There are many public schools in the central Brevard area. New schools have been built, additions have been made to others, and new ones are

planned for the future to meet the needs of an increasing population. There are also schools for retarded children and a child guidance center. Parochial schools are operated by the Roman Catholic, Episcopal, and Seventh Day Adventist churches. School bus service is available to outlying districts. Nonresidents are required to pay a small fee (tuition) for children who attend public schools. Florida Institute of Technology, a 4-year engineering college, is located in Melbourne, Florida. Stetson University, Brevard Graduate Center, located in Merritt Island High School, offers graduate studies in the fields of education and business. Brevard Community College is a junior college located in Cocoa, Florida, offering an associate degree in academic studies. It also offers noncredit courses in vocational training. Both day and evening classes are available.

C. Health and Sanitation

Several modern medical and dental facilities are convenient to the tracking station. Wuesthoff Memorial Hospital in Cocoa and Jess Parrish Memorial Hospital in Titusville (nonprofit community hospitals) are large, modern, and well equipped. Cape Canaveral Hospital, located in Cocoa Beach, is a smaller but modern hospital. In addition, Patrick Air Force Base provides medical and dental services to both active and retired military personnel.

Physicians specializing in all phases of medicine are available in the area; however, even with an appointment, waiting is not unusual.

D. Recreation and Entertainment

Recreation facilities at Merritt Island are both numerous and varied. Most of them are centered around the fine beaches and pleasant waters for which Florida is noted.

The extensive beaches, wide and hard packed, are a great attraction; and there is little need to worry unduly about possible hazards of swimming, even for young children; as there is very little undertow. There is plenty of opportunity to enjoy beach parties and festivals, as they are a year-round part of community life.

Boating is very popular on both the Indian and Banana rivers. Motorboat and sailboat races are held all year on the Indian River, which is also popular for

water skiing. There are excellent facilities for boat docking, repairing, and servicing on both rivers. Water skiing or scuba diving may be enjoyed at one of the clubs active in these sports.

There is also plenty of opportunity for fishing, which is naturally very popular in this area, known as the "saltwater trout capital of the world." In addition, sportsmen find ample facilities for fresh water and deep sea fishing. No fishing license is required for saltwater; however, a license is required for any type of freshwater fishing at a cost of \$3.25. For the automobile enthusiasts, the Indian River Sports Club holds regularly scheduled gymkhanas and rallies. And bowlers find that large air-conditioned bowling alleys are conveniently located. In addition, the warm, pleasant weather is ideal for golfing; so that many people, both residents and visitors, enjoy the facilities at the golf clubs in the area. The Par 3 Golf Course, located north of Cocoa, is lighted in the evenings. The Rockledge Golf and Country Club, in addition to an 18-hole course and a full-time professional instructor, has a clubhouse with a dining room, a lounge, and a pool. These are, however, available only to members of the country club.

Parks and playgrounds also provide recreational facilities. Among those available are Taylor Park, in downtown Cocoa; Provost Park, in West Cocoa; Smith Park, Cocoa; McLarty Park, in Rockledge; and Kiawanis Island, on Merritt Island. Concerts are enjoyed by many residents, and the concert season brings many fine musical programs to the community. There are also live theater presentations by little theater groups and other organizations, and several movie theaters offer first-run features. In addition, there are many fraternal, civic, and service clubs in the community; and almost every national organization is represented. There are several radio stations in the area, two TV stations in Orlando, and one TV station in Daytona Beach. Merritt Island enjoys good reception from all of these. There is a public library system, which is free to all residents and visitors.

Florida offers almost unlimited opportunities for sightseeing, and Merritt Island is an ideal location from which to travel to the state's many attractions, some of which are not more than a day's journey away.

A list of some of the nearby attractions, with the distance from Merritt Island, is presented below.

Mead Botanical Gardens (Orlando)	45 miles
McKee Jungle Gardens	59 miles
Disney World	55 miles
Cypress Gardens	93 miles
Marineland	97 miles
Bok Singing Tower	113 miles
Rainbow Springs	146 miles
Sarasota	200 miles
Parrot Jungle	205 miles

E. Emergency Assistance

Brevard County offers more than the normal amount of emergency assistance services. New personnel are provided with a list of telephone numbers relative to safety, health, welfare, property, and rights when reporting for duty.

V. TRANSPORTATION

Transportation at Merritt Island presents no problem, as most all major forms of transportation - airplane, bus, and taxi - are readily available. The nearest commercial airport is in Melbourne, 20 miles south, or TICO Airport at Titusville. Complete service by the large airlines is available at Orlando, 42 miles west of Merritt Island, with limousine service between Cocoa Beach, Merritt Island, and the airport.

The nearest passenger railroads can be boarded at Orlando, Winter Park, or Sanford, a distance of approximately 60 miles. Merritt Island Airport provides small-plane service. Buses are available for long-distance travel. Bus travel to other areas is supplied by the Florida Greyhound Lines, which schedules 40 departures daily from Cocoa. Both taxi and automobile rental services are available, or you may use your personal car. However, if you drive your own car, you should be aware of certain laws. For example, Florida laws make it mandatory to have Florida tags on your car the day you begin work on local payroll or the day on which your children enter school. A Florida driver's license is also required. The law requires that you have an automobile registration card, but not a certificate of

ownership, to obtain Florida license plates. If the car is unencumbered, a Florida certificate of ownership may be applied for when you get license plates. The fee for the certificate is \$1.50. Automobiles that are registered in Florida must pass an automobile inspection on an annual basis. This inspection is due 10 days after registration and costs \$3. Automobile registration costs vary from \$13 for a small car to \$35 for a large car. Boat trailers are registered at a cost of \$3.50 to \$6.50 for normal size pleasure craft and must all be registered. Boats that are powered by less than 10 horsepower motors are not required to be registered if used in rivers, ponds and lakes; however, over 10 horsepower, the cost varies between \$2.50 and \$6.50 for a normal size pleasure craft.

VI. CURRENCY AND BANKING

A. Local Banking Facilities

Complete banking facilities are provided in the area. Some of those banks are as follows:

- Barnett First National Bank of Cocoa
- City National Bank of Cocoa
- Central Brevard National Bank at Cocoa
- Merritt Island Bank, Merritt Island
- First National Bank of Merritt Island
- First Citizens Bank & Trust Co., Titusville, Florida

Most of the banks are open from 9 a. m. to 1:30 p. m. Monday through Friday. Drive-in windows are open daily during normal banking hours; however, they remain open until 6 p. m. Monday through Thursday and until 7 p. m. on Friday.

B. Tax Information

Florida has no personal income tax; however, there is a personal intangible tax on savings accounts, stocks, and bonds which amounts to approximately 1/10 of 1 percent. Real estate millage rates vary according to the area, with an average being around 30 mills or \$30 for every \$1,000 of real estate value.

Florida does have a homestead exemption of \$5,000 to those people who qualify. Sales tax is assessed at the rate of 4 percent on all items except food and drugs.

VII. CLOTHING/GROOMING

The attire on station is casual. Short-sleeve shirts are generally worn year around. During the winter months a light jacket suffices. Heavy winter clothing is very seldom used.

VIII. WHAT TO DO UPON ARRIVAL

Your assignment is announced by TWX from Columbia prior to your arrival in the area. A clearance request is prepared in advance of your arrival, so that you may obtain a badge as quickly as possible. Stop at the badging facility at gate 3 (NASA Parkway) to pick up your badge. It is recommended that you contact the station as soon as you arrive in the area and report to either the M&O Supervisor or the Administrator. If you call from Titusville, use a local number: 267-8400, extension 5910. If you call from Cocoa, Cocoa Beach, or Merritt Island, use the NASA exchange number: 867-5910.